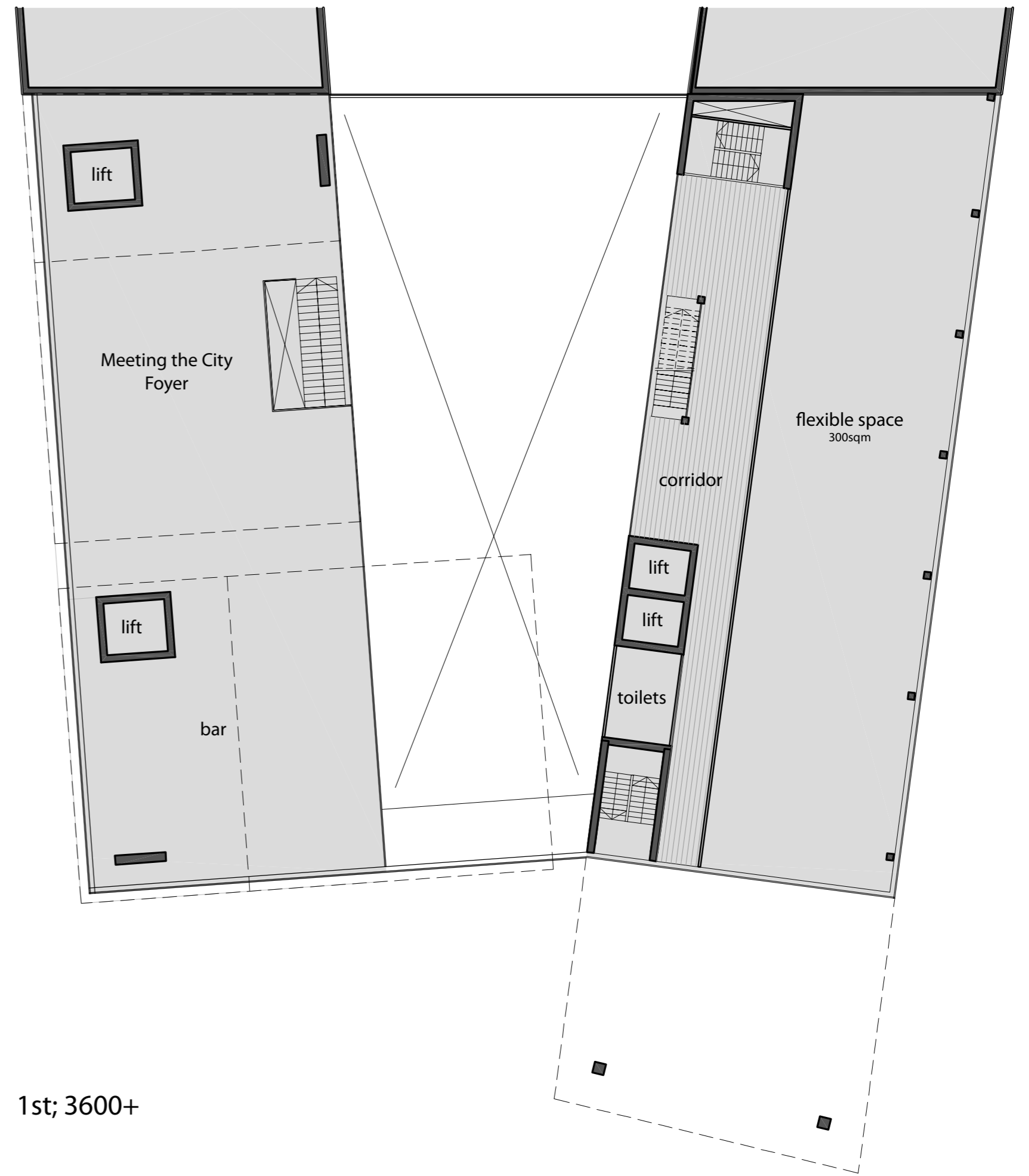


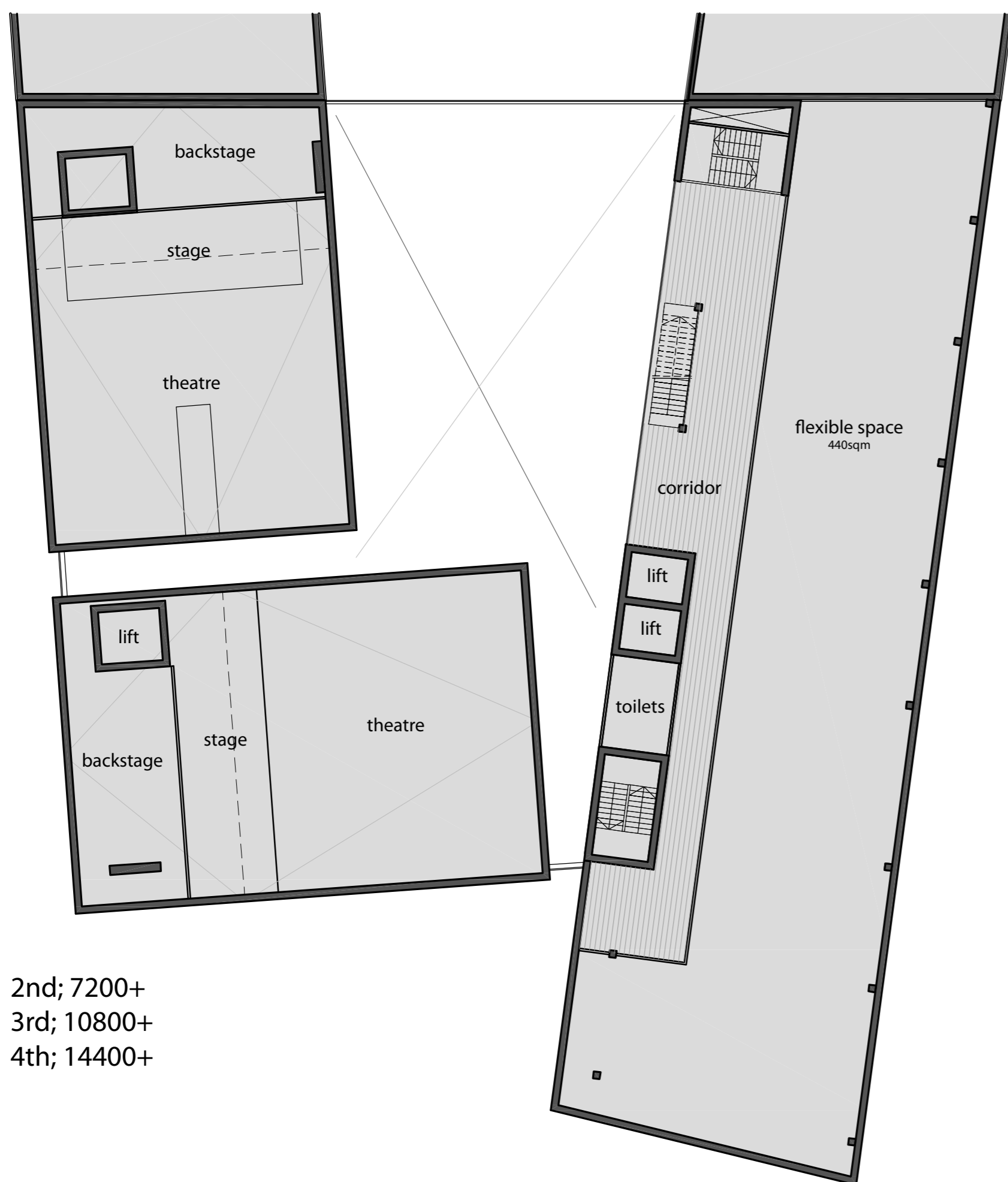
Plans 1:200



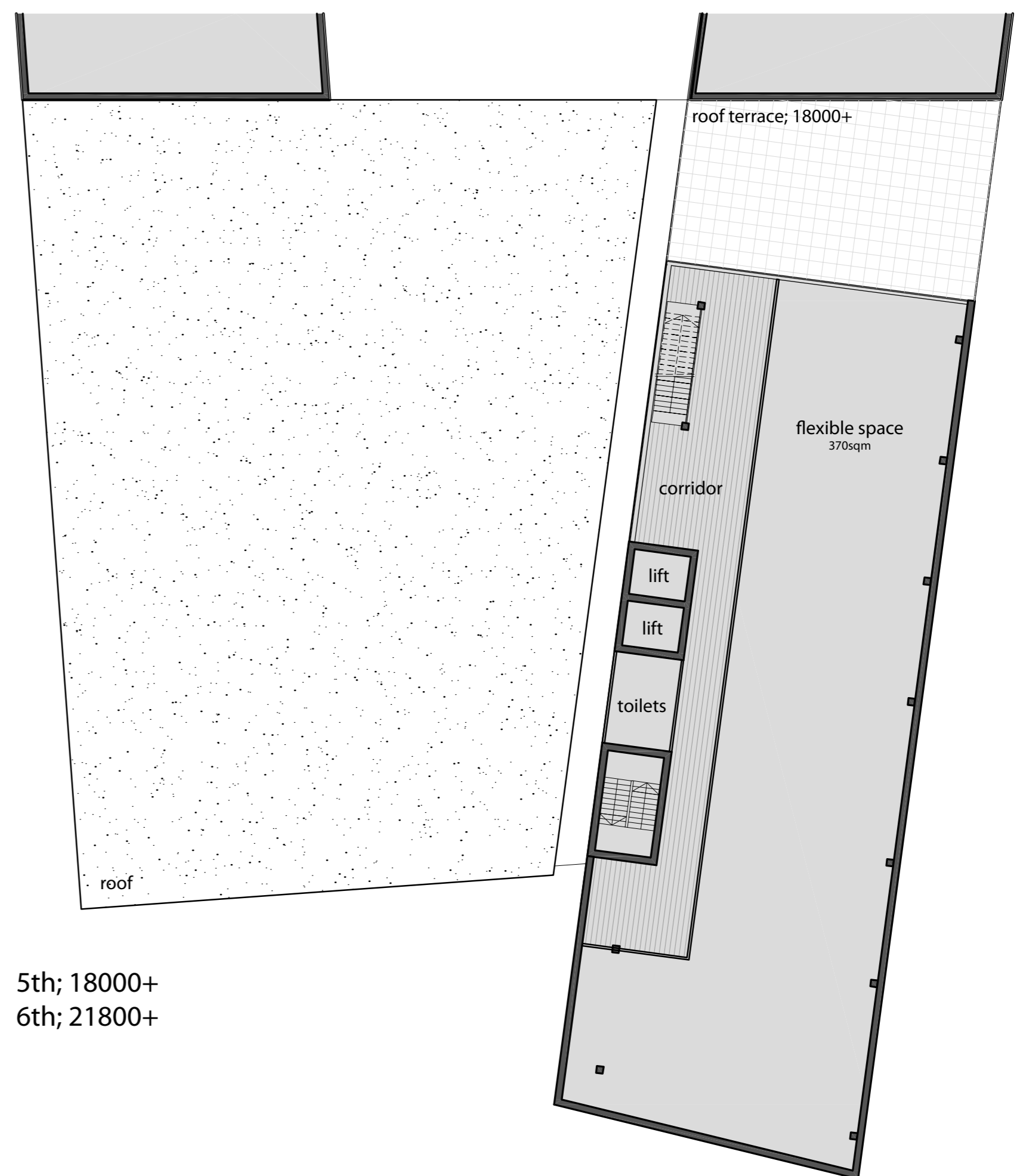
Ground Floor; P=0



1st; 3600+



2nd; 7200+
3rd; 10800+
4th; 14400+



5th; 18000+
6th; 21800+

Practice facility sqm overview

1st	300 sqm
2nd	440 sqm
3rd	440 sqm
4th	440 sqm
5th	370 sqm
6st	370 sqm
total;	2360 sqm

The columns and windows of the practise facility are arranged on a gridsize of 1,8 meters. This makes it relative easy to rearrange the rooms when there are changes in the demand. Trends like percussion and jumpstyle dancing come and go very rapidly.

